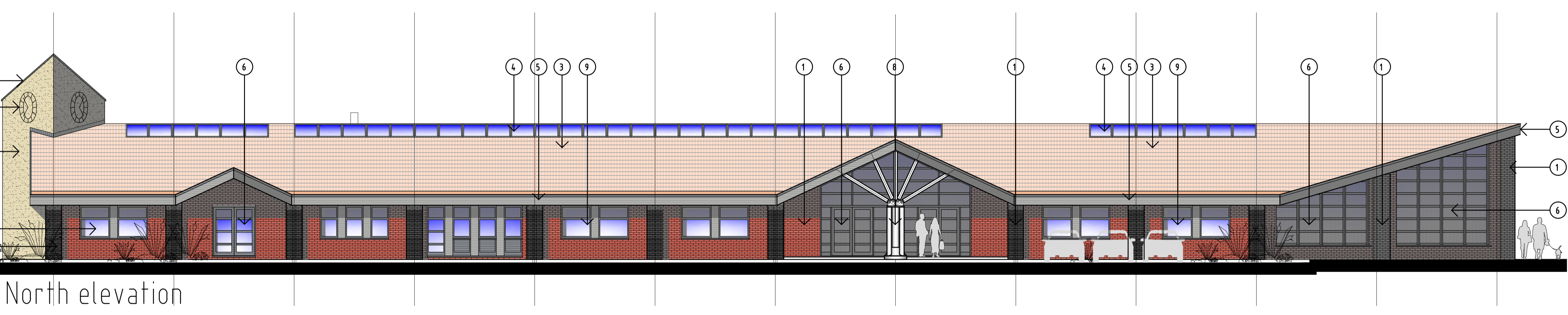
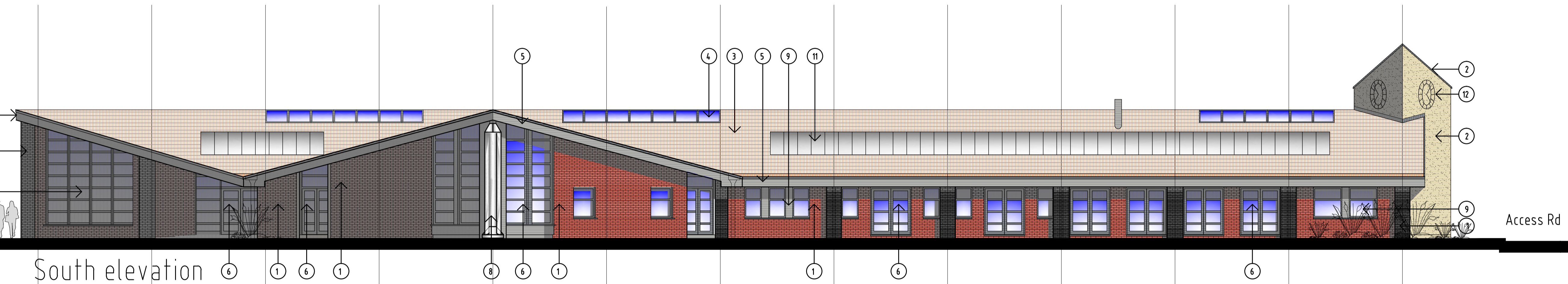
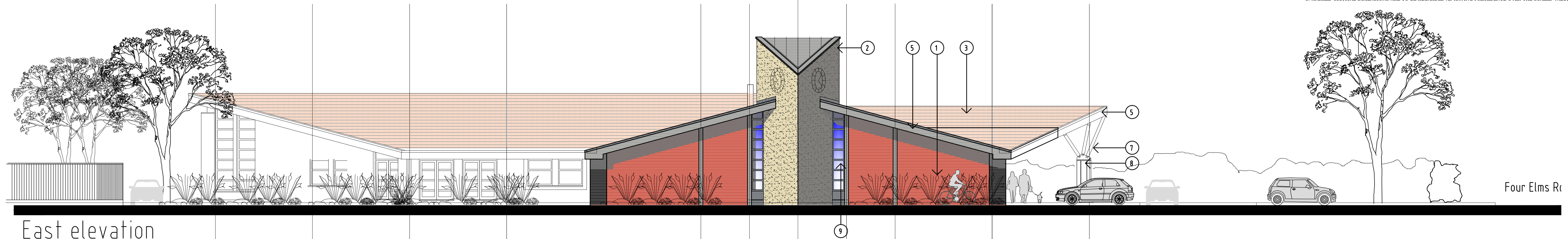
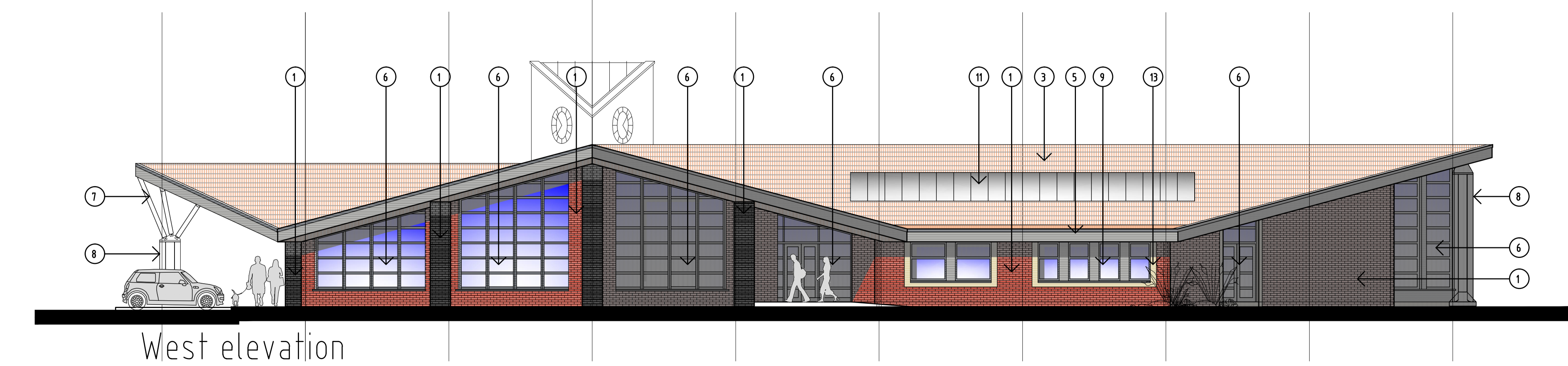


THIS DRAWING HAS BEEN PRODUCED BY ELECTRONIC MEANS. SHOULD THE SCALE MEASUREMENTS BE TAKEN BY MEANS OTHER THAN ELECTRONIC (e.g. FROM A PRINTED COPY), THE FOLLOWING MUST BE TAKEN INTO CONSIDERATION BEFORE SCALING IS UNDERTAKEN:
 1. ENSURE THAT THE COPY HAS BEEN PRINTED/PLOTTED ON THE STATED SHEET SIZE WITH THE PLOTTING SCALE SET TO A CORRECT RATIO.
 2. ENSURE THAT AN ADEQUATE ALLOWANCE (DEPENDANT ON THE STATED SCALE) IS MADE FOR THE INEVITABLE DISTORTIONS INTRODUCED BY PLOTTING/PRINTING AND COPYING PROCESSES.
 3. MARKED CRITICAL DIMENSIONS ARE TO BE REGARDED AS HAVING PRECEDENCE OVER THE SCALED VALUES.



- KEY TO PROPOSED MATERIALS**
- 1 Fairfaced brickwork facades with plain brick piers and contrasting infill panels in brickwork with recessed brick courses, or plain coloured render.
 - 2 Coloured render finish to tower with lead flashings and cappings
 - 3 Artificial slate roofing (Redland Cambrian) and matching ridge tiles.
 - 4 Coupled ventilating 'velux type' roof windows.
 - 5 Concealed level gutter behind colour coated metal fascia and capping, with colour coated metal rainwater downpipe system.
 - 6 Purpose made colour coated metal entrance door and glazed screens assemblies.
 - 7 Stained timber roof supports with painted metal fixings and fittings.
 - 8 Round section painted composite column assembly
 - 9 Purpose made colour coated metal window units with matching horizontal sliding/projecting opening lights.
 - 10 1.8 m high close boarded fence.
 - 11 Proprietary roof mounted solar panels.
 - 12 Stainless steel finish clock dial and arms.
 - 13 Projecting coloured render margin around grouped window units



REV	DESCRIPTION	DATE	INIT	CHKD
F	Material colours added	06-07-10	hjl	
E	Solar panels, boiler flue, rooflights added	28-06-10	hjl	
D	Materials and key updated	15-06-10	hjl	
C	Updated to co-ordinate with plans	14-06-10	hjl	
B	Rooflight added	03-06-10	hjl	
A	Generally updated, Entry porch revised etc.	17-05-10	hjl	

calfordseaden construction & property consultants

Client: Orbit
 Project: Edenbridge
 Title: Community Centre - Elevations

Scale: 1/100@A1 Date: 26-04-10 Drawn By: hjl Checked By: K09-0545 Project No: 203 Drawing No: F

St John's House, 1A Knoll Rise, Orpington, Kent BR6 0JX
 T 01689 888222 F 01689 888299 E orpington@calfordseaden.co.uk
 calfordseaden LLP is a Limited Liability Partnership Registered in England & Wales number OC313838
 ORPINGTON • LONDON • BIRMINGHAM • WINCHESTER

www.calfordseaden.co.uk